



R Series Diesel Counterbalanced Trucks

with capacities of 1,000 to 3,500kg



ZHEJIANG HANGCHA IMP. & EXP. CO., LTD.

Factory site: 666 Xiangfu Road,
Hangzhou, Zhejiang, China (311305)

Tel: +86-571-88926735 88926755
Fax: +86-571-88926789 88132890

sales@hcforklift.com
www.hcforklift.com



Follow us on
Facebook



Follow us on
YouTube



Follow us on
WeChat



ISO14001
ISO14001:2015



ISO9001
ISO9001:2015



HANGCHA trucks conform
to the European Safety
Requirements.

2019 VERSION 1 / COPYRIGHT 2019/04

HANGCHA GROUP CO., LTD. reserves the right to make any changes without notice concerning colors, equipment, or specifications detailed in this brochure, or to discontinue individual models. The colors of trucks, delivered may differ slightly from those in brochures.

The World of Hangcha





**Simple/
Solid/
Smart**

Introduction

The new generation R series forklift is combined with durability and ergonomics, providing productivity unmatched by other forklifts and the comfort for hours of tireless operation. Add friendliness to the environment, simple servicing, efficiency on the job, high standards of safety---it's the perfect tool for the most demanding application.

1. Simple, Easy: **SERVICE**
2. Simple, Comprehensive: **PANEL**
3. Strong, Wide view: **MASTS**
4. So much footroom: **DRIVER ROOM**



Efficiency

Thanks to the long wheelbase design, the longitudinal stability of whole truck is much better, the hoisting capacity at same lift height are enhanced by an average of 100kg compared with former truck. At the same time, it prolongs work time of rear wheel as the reduced rear axle's load.

The travel speed of truck has been raised, for example, the 2-2.5t type comes to 20km/h.

Increasing the hard proportion of hydraulic pipe, adopting right angle connector or straight through connector, that reduce the pressure loss of pipeline, and raise the lifting speed of mast, the speed is increased by an average of 10% compared with former truck.

Turning radius and width of right angle stacking aisle are decreased through reducing the dimensions of whole truck, that raise the efficiency of storehouse.

Servicing

Easy opened engine cover and one-touch removal of the floorboard get you right to service operation, and reduces down-time.

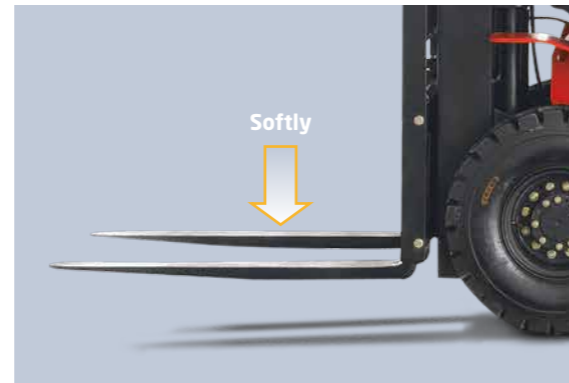
The reasonable arrangement of fuse and installation of instrument, enable the replacing for fuse and maintenance for instrument more easy.



Environment Friendly

The environment friendly engines all meet related emission control regulation. The noise emission also comes up to EU standard.

The Metal hood and molding sound insulation matches environmental protection demands.



Safe

A throttling device is set in pipe system, the mast won't result in failing control of mast even some pipes broke.

By using a built-in hood lock device, the safe level of the truck has been raised.



The clearance between the steering axle and support rod can be adjusted, to improve the adaptability for ground.

The pin of the tilt cylinder adopts a build-in grease fitting, which enables the grease fitting more dependable.

The high performance specific tires for forklift trucks increase the work life of tires much more.



For more than 30 years, HANGCHA GROUP CO., LTD. Has played a leading role in the manufacture and production of Chinese forklift industry. We constantly strive to develop and incorporate the latest advances in forklift design and technology to ensure that our products provide an optimum level of performance, all the time. Our new generation R series of forklifts truly exemplifies this commitment to excellence.

5. Durable: **HYDRAULICS**
6. Clean, Reliable: **ENGINES**
7. Progressive: **BRAKES**
8. Cool, Smooth: **TRANSMISSION**



Appearance

The latest appearance design method was used to create the R series fluent and aesthetic outline, that matches the latest appearance trend.

The large engineering plastic covering enables the whole truck looks friendly and natural.

Cylinder

Oil seal rings used for tilting cylinder, lifting cylinder and turning cylinder all adopt the first class international product, the sealing performance has been proven through ten of thousands fatigue test.

The soft landing system for lifting cylinder decreases the level of noise and shock when the mast lowered to termination phase.

Cooling System

Newly adopted combined type aluminum radiator improves the radiator cooling performance greatly.

Advanced heat dissipation technology improves heat dissipation channel, that enhances the truck heat dissipation capability further, the water temperature is reduced 15% compared with former truck.

Brakes

The forklifts all adopt the new type drum brake, water-proof slot on the brake drum and framework oil seal on the axle tube avoid water or oil entering the brake drum, enable the dependability of brake to raise consumedly.

Transmission & Engine

The transmission can be chosen among OKAMURA, NISSAN and HC (made in china with the Japanese technique), with advanced structure and dependable function. Among them, the OKAMURA transmission adopts advanced float type structure, which can achieve a flexible connection between engine and frame, the vibrations of transmission to the frame is reduced. The engine can be chosen among the TD27, C240, 4JG2, 4TNV94L diesel engine, with great power, economical fuel consumption and dependable functions.

OKAMURA
transmission



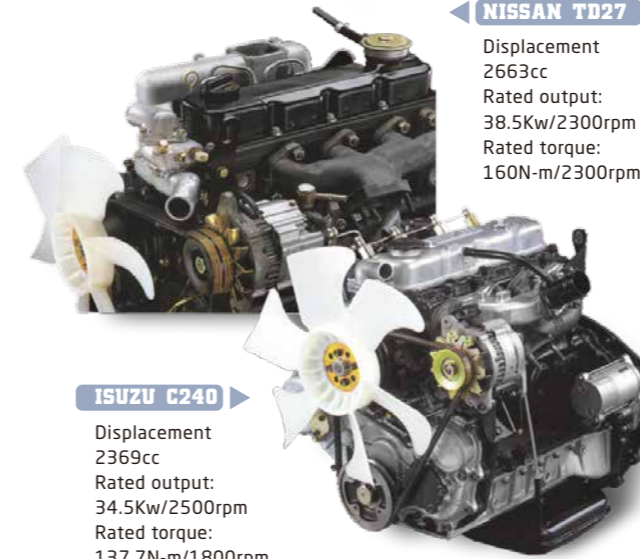
OKAMURA
new floating type

OKAMURA 2-3t T/M is Floating Types, The only one in China. Floating types are designed to reduce the transmission of vibrations to the chassis in small and mid-sized (1 to 5 tons) forlift trucks, thereby reducing operator fatigue and improving riding comfort. Specially-shortened design is ideal for this floating-type installation.

Compact design offers same dimensions as conventional integrated models. May be coupled to the differential axles. Making installation, removal, and maintenance easy.

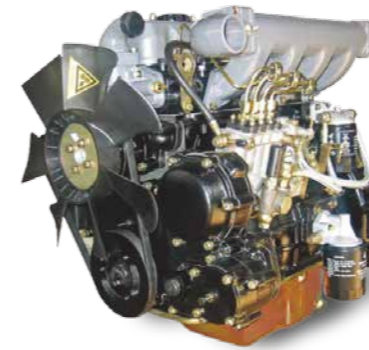
NISSAN TD27

Displacement
2663cc
Rated output:
38.5Kw/2300rpm
Rated torque:
160N-m/2300rpm



ISUZU C240

Displacement
2369cc
Rated output:
34.5Kw/2500rpm
Rated torque:
137.7N-m/1800rpm



XINCHAI A498BT1

Displacement
3168cc
Rated output:
36.8Kw/2400rpm
Rated torque:
186N-m/1700rpm

YANMAR 4TNV94L

Displacement
3054cc
Rated output:
43Kw/2500rpm
Rated torque:
205N-m/1000rpm



ISUZU 4JG2 PE-01

Displacement
3059cc
Rated output:
44.9Kw/2450rpm
Rated torque:
186.3N-m/1700rpm



Operation

Adopted advanced ergonomic technology optimizes the design of control system, improves the comfortable of operation much more.

Adopted advanced vibration-reduction technology designs each part's vibration reduction, reduces the whole truck vibration. Among them, the hood is designed to full floating type, and vibration reduction device for steering axle enables the operation more comfortable.



The torque converter models adopt electronic-hydraulic forward-reverse control technology, meaning less effort and less total time used during this often-performed function.

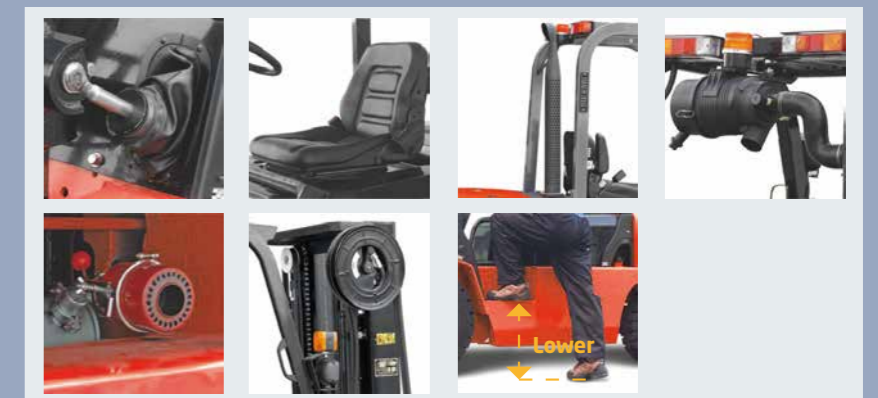
Adopted recently developed redirector decreases the steering wheel force to 6~8N only, that reduce 50% compared with former truck.

The grease fittings and bushes added around the shaft of control mechanism decreases the force of pedal, that are reduced 30% compared with former truck.

Options

- / 2.0-5.0m duplex mast
- / 2.5-4.0m full free duplex mast
- / 4.3-6.5m triplex mast
- / Special carriage and backrest
- / Other dimension forks
- / Dual drive wheel with fender
- / Solid tyre
- / Non-marking tyre(white, green)
- / Cabin
- / Heater and air conditioner
- / Fire extinguisher
- / Semi-suspension seat or full-suspension seat
- / Dual air cleaner or special air cleaner
- / Rear working light
- / Customer painting
- / Auxiliary hydraulic valve modules
- / High-mounted exhaust system
- / Middle-mounted exhaust system
- / Spark arrester

- / Purified exhaust system
- / Radiator screen
- / Sideshifter
- / Integrated sideshifter
- / Other attachment



R Seris1-1.8t forklift specification:

		HANGCHA GROUP CO.,LTD.										
Distinguishing mark	1.1	Manufacturer	HANGCHA GROUP CO.,LTD.									
	1.2	Manufacturer's type designation	CPCD10N-RW10	CPCD10N-RW32	CPCD10N-RG26	CPCD15N-RW10	CPCD15N-RW32	CPCD15N-RG26	CPCD18N-RW10	CPCD18N-RW32	CPCD18N-RG26	
	1.3	Drive: electric (battery or mains), diesel, petrol, fuel gas	Diesel	Diesel	Diesel	Diesel	Diesel	Diesel	Diesel	Diesel	Diesel	
	1.5	Rated capacity/rated load	Q (kg)	1000	1000	1000	1500	1500	1500	1750	1750	
	1.6	Load centre distance	c (mm)	500	500	500	500	500	500	500	500	
	1.8	Load distance, centre of drive axle to fork	x (mm)	405	405	405	405	405	405	410	410	
		Rear overhang	mm	420	420	420	460	460	460	495	495	
	1.9	Wheelbase	y (mm)	1400	1400	1400	1400	1400	1400	1400	1400	
	Weight	2.1	Service Weight	kg	2450	2450	2450	2740	2740	2740	2930	2930
2.2		Axle loading, laden front/rear	kg	2940/510	2940/510	2940/510	3690/550	3690/550	3690/550	4075/605	4075/605	
2.3		Axle loading, unladen front/rear	kg	1290/1160	1290/1160	1290/1160	1220/1520	1220/1520	1220/1520	1190/1740	1190/1740	
Tyres, chassis	3.2	Tyre size, front		6.50-10-10PR	6.50-10-10PR	6.50-10-10PR	6.50-10-10PR	6.50-10-10PR	6.50-10-10PR	6.50-10-10PR	6.50-10-10PR	
	3.3	Tyre size, rear		5.00-8-10PR	5.00-8-10PR	5.00-8-10PR	5.00-8-10PR	5.00-8-10PR	5.00-8-10PR	5.00-8-10PR	5.00-8-10PR	
	3.6	Tread, front	b ₁₀ (mm)	890	890	890	890	890	890	890	890	
	3.7	Tread, rear	b ₁₁ (mm)	900	900	900	900	900	900	900	900	
	Dimensions	4.1	Tilt of mast/fork carriage forward/backward	α/β(°)	6/12	6/12	6/12	6/12	6/12	6/12	6/12	6/12
4.2		Height, mast lowered	h ₁ (mm)	1995	1995	1995	1995	1995	1995	1995	1995	
4.3		Free lift	h ₂ (mm)	155	155	155	155	155	155	155	155	
4.4		Lift	h ₃ (mm)	3000	3000	3000	3000	3000	3000	3000	3000	
4.5		Height, mast extended	h ₄ (mm)	3960	3960	3960	3960	3960	3960	3960	3960	
4.7		Height of overhead guard (cabin)	h ₆ (mm)	2130 (2190*)	2130 (2190*)	2130 (2190*)	2130 (2190*)	2130 (2190*)	2130 (2190*)	2130 (2190*)	2130 (2190*)	
4.20		Length to face of forks	l ₂ (mm)	2225	2225	2225	2265	2265	2265	2300	2300	
4.21		Overall width	b ₁ (mm)	1080	1080	1080	1080	1080	1080	1080	1080	
4.22		Fork dimensions ISO 2331	s/e/l (mm)	920x100x35	920x100x35	920x100x35	920x100x35	920x100x35	920x100x35	920x100x35	920x100x35	
4.31		Ground clearance, laden, below mast	m ₁ (mm)	115	115	115	115	115	115	115	115	
4.32		Ground clearance, centre of wheelbase	m ₂ (mm)	145	145	145	145	145	145	145	145	
4.35		Turning radius	W _a (mm)	1925	1925	1925	1970	1970	1970	2005	2005	
		"Min. right angle stacking aisle width (Add load length and clearance)"	mm	2330	2330	2330	2375	2375	2375	2410	2410	
Performance data		5.1	Travel speed, laden/unladen	km/h	-/14.5	-/14.5	-/14.5	-/14.5	-/14.5	-/14.5	-/14.5	-/14.5
	5.2	Lift speed, laden/unladen	m/s	0.460/-	0.460/-	0.460/-	0.510/-	0.510/-	0.510/-	0.510/-	0.510/-	
	5.3	Lowering speed, laden/unladen	m/s	0.450/-	0.450/-	0.450/-	0.450/-	0.450/-	0.450/-	0.450/-	0.450/-	
	5.5	Drawbar pull, laden/unladen	N	20500/-	15900/-	19500/-	20500/-	15900/-	19500/-	20500/-	15900/-	
	5.7	Gradeability, laden/unladen	%	20/-	20/-	20/-	20/-	20/-	20/-	20/-	20/-	
Combustion-engine	7.1	Engine manufacturer/type		ISUZU/C240NKFC01	YANMAR/4TNE92-HRJ	XINCHAI/NC485BPBG	ISUZU/C240NKFC01	YANMAR/4TNE92-HRJ	XINCHAI/NC485BPBG	ISUZU/C240NKFC01	YANMAR/4TNE92-HRJ	
		Emission STD		StageIIIA/GB3	StageIIA/Tier 3		StageIIIA/GB3	StageIIA/Tier 3		StageIIIA/GB3	StageIIA/Tier 3	
	7.2	Engine power according to DIN ISO 1585	kw	35.4	32.8	30	35.4	32.8	30	35.4	32.8	
	7.3	Rated speed	min	2500	2450	2600	2500	2450	2600	2500	2450	
	7.4	Number of cylinders/displacement	(-)/(cm ³)	4/2369	4/2659	4/2270	4/2369	4/2659	4/2270	4/2369	4/2659	
	7.10	Battery voltage/nominal capacity	V/Ah	12/60	12/60	12/60	12/60	12/60	12/60	12/60	12/60	
		Rated torque	N·m/r/min	137.7/1800	149.4/1600	131/1600	137.7/1800	149.4/1600	131/1600	137.7/1800	149.4/1600	
		Bore x stroke	mm	86x102	92x100		86x102	92x100		86x102	92x100	
		Transmissions Manufacturer		CHINA	CHINA	CHINA	CHINA	CHINA	CHINA	CHINA	CHINA	
		Transmissions Type		Powershift	Powershift	Powershift	Powershift	Powershift	Powershift	Powershift	Powershift	
	Stage FWD/RVS		1/1	1/1	1/1	1/1	1/1	1/1	1/1	1/1		
Addition data	10.1	Operating pressure for attachments	bar	145	145	145	145	145	145	145		
	10.4	Fuel tank capacity	liter	50	50	50	50	50	50	50		

Note: * With suspension seat or cabin.

1.Special lifting height available(Duplex mast:2.5m,2.7m,3.0m,3.3m,3.6m,4m,4.5m.Triplex mast:4.3m,4.5m,4.8m,5m,5.5m,6m) 2.Attachment available.

3.The specification in the table are for standard models only.For further information please contact us. 4.Specification are subject to change without notice.

R series 2.0-2.5t forklift specification :

		HANGCHA GROUP CO.,LTD.																																												
Distinguishing mark	1.1	Manufacturer	HANGCHA GROUP CO.,LTD.																																											
	1.2	Manufacturer's type designation	CPD20N-RW10	CPD20N-RW10B	CPD20N-RW13	CPD20N-RW15A	CPD20N-RW27	CPD20N-RW32	CPD20N-RW33	CPD20N-RW33B	CPD20N-RW43	CPD20N-RW43B	CPD20N-RW55	CPD20N-RW55B	CPD20N-RW56	CPD20N-RW56B	CPD20N-RG2	CPD20N-RG5	CPD25N-RW10	CPD25N-RW10B	CPD25N-RW13	CPD25N-RW15A	CPD25N-RW27	CPD25N-RW32	CPD25N-RW33	CPD25N-RW33B	CPD25N-RW43	CPD25N-RW43B	CPD25N-RW55	CPD25N-RW55B	CPD25N-RG2	CPD25N-RG5														
	1.3	Drive: electric (battery or mains), diesel, petrol, fuel gas	Diesel				Diesel				Diesel				Diesel				Diesel				Diesel				Diesel																			
	1.5	Rated capacity/rated load	Q (kg)		2000		2000		2000		2000		2000		2000		2000		2500		2500		2500		2500		2500		2500		2500		2500													
	1.6	Load centre distance	c (mm)		500		500		500		500		500		500		500		500		500		500		500		500		500		500		500													
	1.8	Load distance, centre of drive axle to fork	x (mm)		475		475		475		475		475		475		475		475		475		475		475		475		475		475		475													
		Rear overhang	mm		405		405		405		405		405		405		405		480		480		480		480		480		480		480		480													
	1.9	Wheelbase	y (mm)		1650		1650		1650		1650		1650		1650		1650		1650		1650		1650		1650		1650		1650		1650		1650													
	Weight	2.1	Service Weight	kg		3440		3440		3440		3440		3440		3440		3440		3765		3765		3765		3765		3765		3765		3765														
2.2		Axle loading, laden front/rear	kg		4815/625		4815/625		4815/625		4815/625		4815/625		4815/625		4815/625		5530/735		5530/735		5530/735		5530/735		5530/735		5530/735		5530/735															
2.3		Axle loading, unladen front/rear	kg		1640/1800		1640/1800		1640/1800		1640/1800		1640/1800		1640/1800		1640/1800		1560/2205		1560/2205		1560/2205		1560/2205		1560/2205		1560/2205		1560/2205															
Tyres, chassis	3.2	Tyre size, front			7.00-12-12PR		7.00-12-12PR		7.00-12-12PR		7.00-12-12PR		7.00-12-12PR		7.00-12-12PR		7.00-12-12PR		7.00-12-12PR		7.00-12-12PR		7.00-12-12PR		7.00-12-12PR		7.00-12-12PR		7.00-12-12PR		7.00-12-12PR															
	3.3	Tyre size, rear			6.00-9-10PR		6.00-9-10PR		6.00-9-10PR		6.00-9-10PR		6.00-9-10PR		6.00-9-10PR		6.00-9-10PR		6.00-9-10PR		6.00-9-10PR		6.00-9-10PR		6.00-9-10PR		6.00-9-10PR		6.00-9-10PR		6.00-9-10PR															
	3.6	Tread, front	b10 (mm)		965		965		965		965		965		965		965		965		965		965		965		965		965		965															
	3.7	Tread, rear	b11 (mm)		970.5		970.5		970.5		970.5		970.5		970.5		970.5		970.5		970.5		970.5		970.5		970.5		970.5		970.5															
Dimensions	4.1	Tilt of mast/fork carriage forward/backward	α/β(°)		6/12		6/12		6/12		6/12		6/12		6/12		6/12		6/12		6/12		6/12		6/12		6/12		6/12		6/12															
	4.2	Height, mast lowered	h1 (mm)		1985		1985		1985		1985		1985		1985		1985		1985		1985		1985		1985		1985		1985		1985															
	4.3	Free lift	h2 (mm)		140		140		140		140		140		140		140		140		140		140		140		140		140		140															
	4.4	Lift	h3 (mm)		3000		3000		3000		3000		3000		3000		3000		3000		3000		3000		3000		3000		3000		3000															
	4.5	Height, mast extended	h4 (mm)		4045		4045		4045		4045		4045		4045		4045		4045		4045		4045		4045		4045		4045		4045															
	4.7	Height of overhead guard (cabin)	h6 (mm)		2140 (2200*)		2140 (2200*)		2140 (2200*)		2140 (2200*)		2140 (2200*)		2140 (2200*)		2140 (2200*)		2140 (2200*)		2140 (2200*)		2140 (2200*)		2140 (2200*)		2140 (2200*)		2140 (2200*)		2140 (2200*)															
	4.20	Length to face of forks	l2 (mm)		2530		2530		2530		2530		2530		2530		2530		2530		2605		2605		2605		2605		2605		2605															
	4.21	Overall width	b1 (mm)		1155		1155		1155		1155		1155		1155		1155		1155		1155		1155		1155		1155		1155		1155															
	4.22	Fork dimensions ISO 2331	s/e/l (mm)		1070x122x40		1070x122x40		1070x122x40		1070x122x40		1070x122x40		1070x122x40		1070x122x40		1070x122x40		1070x122x40		1070x122x40		1070x122x40		1070x122x40		1070x122x40		1070x122x40															
	4.31	Ground clearance, laden, below mast	m1 (mm)		105		105		105		105		105		105		105		105		105		105		105		105		105		105															
	4.32	Ground clearance, centre of wheelbase	m2 (mm)		150		150		150		150		150		150		150		150		150		150		150		150		150		150															
	4.35	Turning radius	Wa (mm)		2175		2175		2175		2175		2175		2175		2175		2175		2235		2235		2235		2235		2235		2235															
		"Min. right angle stacking aisle width (Add load length and clearance)"	mm		2650		2650		2650		2650		2650		2650		2650		2650		2710		2710		2710		2710		2710		2710															
Performance data	5.1	Travel speed, laden/unladen	km/h		-/20.5		-/20		-/18		-/19.5		-/20		-/20		-/20		-/22		-/20.5		-/20.5		-/20		-/18		-/19.5		-/20		-/20													
	5.2	Lift speed, laden/unladen	m/s		0.410/-		0.510/-		0.500/-		0.450/-		0.500/-		0.500/-		0.580/-		0.530/-		0.580/-		0.470/-		0.480/-		0.580/-		0.570/-		0.520/-		0.580/-													
	5.3	Lowering speed, laden/unladen	m/s		0.500/-		0.500/-		0.500/-		0.500/-		0.500/-		0.500/-		0.500/-		0.500/-		0.500/-		0.500/-		0.500/-		0.500/-		0.500/-		0.500/-															
	5.5	Drawbar pull, laden/unladen	N		17000		22700		23100		22600		14500		18500		19700		19500		18500		18700		18000		17000		22700		23100		22600													
	5.7	Gradeability, laden/unladen	%		20/-		20/-		20/-		20/-		20/-		20/-		20/-		20/-		20/-		20/-		20/-		20/-		20/-		20/-		20/-													
	Combustion-engine	7.1	Engine manufacturer/type	ISUZU/C240NKF01		ISUZU/4G2 PE-01		UD/TD27		XINCHAU/A498BT1.1		YANMAR/4TNE32-HR		YANMAR/4TNE98-BQFLC		CUMMINS/QSF2.83NA49		MITSUBISHI/S45-Z362CSFL		YANMAR/4TNV94L-BXPHZ		XINCHAU/C450BPG		XINCHAU/A490BPG		ISUZU/C240NKF01		ISUZU/4JG2 PE-01		UD/TD27		XINCHAU/A498BT1.1		YANMAR/4TNE32-HR		YANMAR/4TNE98-BQFLC		CUMMINS/QSF2.83NA49		MITSUBISHI/S45-Z362CSFL		YANMAR/4TNV94L-BXPHZ		XINCHAU/C450BPG		XINCHAU/A490BPG
		Emission STD	StageIIA/GB3		StageII		StageIIA		StageIIA/Tier3		StageIIA		StageIIA		StageIIA		StageIIA		StageIIA/GB3		StageII		StageIIA		StageIIA/GB3		StageII		StageIIA		StageIIA/Tier3		StageIIA		StageIIA		StageIIA		StageIIA		StageIIA					
7.2		Engine power according to DIN ISO 1585	kw		35.4		46		38.5		36.8		42.1		36.5		35.3		34.6		40		37		35.4		46		38.5		36.8		42.1		36.5		35.3		34.6		40					
7.3		Rated speed	min		2500		2450		2300		2400		2450		2300		2500		2250		2400		2650		2650		2500		2450		2300		2400		2450		2300		2500		2250					
7.4		Number of cylinders/displacement	(-)/(cm ³)		4/2369		4/3059		4/2663		4/3168		4/2659		4/3319		4/2800		4/3331		4/3054		4/2670		4/2540		4/2369		4/3059		4/2663		4/3168		4/2659		4/3319		4/2800		4/3331					
7.10		Battery voltage/nominal capacity	V/Ah		12/90		12/90		12/90		12/90		12/90		12/90		12/90		12/90		12/90		12/90		12/90		12/90		12/90		12/90		12/90		12/90		12/90		12/90		12/90					
		Rated torque	N·m/r/min		137.7/1800		186/1700		160/2300		186/1700		149.4/1600		186/1700		186/1500		177/1700		191-208.5/1500		160/1800-2000		148/1900		137.7/1800		186/1700		160/2300		186/1700		149.4/1600		186/1700		186/1500		177/1700					
		Bore x stroke	mm		86x102		95.4x107		96x92		98x105		92x100		98x110		94x100		94x120		94x110		90x105		90x100		86x102		95.4x107		96x82		98x105		92x100		98x110		94x100		94x120					
		Transmissions Manufacturer	CHINA		OKAMURA		CHINA		EXIDY		CHINA		CHINA		CHINA		CHINA		CHINA		CHINA		CHINA		CHINA		CHINA		CHINA		CHINA		CHINA		CHINA		CHINA		CHINA							
		Transmissions Type	Powershift		Powershift		Powershift		Powershift		Powershift		Powershift		Powershift		Powershift		Powershift		Powershift		Powershift		Powershift		Powershift		Powershift		Powershift		Powershift		Powershift		Powershift		Powershift							
	Stage FWD/RVS	1/1		1/1		1/1		1/1		1/1		1/1		1/1		1/1		1/1		1/1		1/1		1/1		1/1		1/1		1/1		1/1		1/1		1/1										
Addition data	10.1	Operating pressure for attachments	bar		175		175		175		175		175		175		175		175		175		175		175		175		175		175		175		175											
	10.4	Fuel tank capacity	liter		60		60		60		60		60		60		60		60		60		60		60		60		60		60		60		60											

Note: * With suspension seat or cabin.

1.Special lifting height available(Duplex mast:2.5m,2.7m,3.0m,3.3m,3.6m,4m,4.5m,5m,5.5m,6m) 2.Attachment available.

3.The specification in the table are for standard models only.For further information please contact us. 4.Spification are subject to change without notice.

R series 3.0-3.5t forklift specification :

		HANGCHA GROUP CO.,LTD.																																														
Distinguishing mark	1.1	Manufacturer	HANGCHA GROUP CO.,LTD.																																													
	1.2	Manufacturer's type designation	CPD30N-RW10	CPD30N-RW10B	CPD30N-RW13	CPD30N-RW15A	CPD30N-RW27	CPD30N-RW32	CPD30N-RW33	CPD30N-RW33B	CPD30N-RW43	CPD30N-RW43B	CPD30N-RW55	CPD30N-RW55B	CPD30N-RW56	CPD30N-RW56B	CPD30N-RG2	CPD30N-RG5	CPD35N-RW13	CPD35N-RW15A	CPD35N-RW27	CPD35N-RW33	CPD35N-RW33B	CPD35N-RW43	CPD35N-RW43B	CPD35N-RW55	CPD35N-RW55B	CPD35N-RW56	CPD35N-RW56B	CPD35N-RG2	CPD35N-RG5																	
	1.3	Drive: electric (battery or mains), diesel, petrol, fuel gas	Diesel				Diesel				Diesel				Diesel				Diesel				Diesel				Diesel																					
	1.5	Rated capacity/rated load	Q (kg)		3000				3000				3000				3000				3500				3500				3500																			
	1.6	Load centre distance	c (mm)		500				500				500				500				500				500				500																			
	1.8	Load distance, centre of drive axle to fork	x (mm)		480				480				480				480				485				485				485																			
		Rear overhang	mm		510				510				510				510				555				555				555																			
	1.9	Wheelbase	y (mm)		1760				1760				1760				1760				1760				1760				1760																			
	Weight	2.1	Service Weight	kg		4255				4255				4255				4255				4555				4555				4555																		
2.2		Axle loading, laden front/rear	kg		6480/775				6480/775				6480/775				6480/775				7195/860				7195/860				7195/860																			
2.3		Axle loading, unladen front/rear	kg		1765/2490				1765/2490				1765/2490				1765/2490				1890/2665				1890/2665				1890/2665																			
Tyres, chassis	3.2	Tyre size, front			28x9-15-14PR				28x9-15-14PR				28x9-15-14PR				28x9-15-14PR				28x9-15-14PR				28x9-15-14PR				28x9-15-14PR																			
	3.3	Tyre size, rear			6.50-10-10PR				6.50-10-10PR				6.50-10-10PR				6.50-10-10PR				6.50-10-10PR				6.50-10-10PR				6.50-10-10PR																			
	3.6	Tread, front	b10 (mm)		1005				1005				1005				1005				1005				1005				1005																			
	3.7	Tread, rear	b11 (mm)		9735				9735				9735				9735				9735				9735				9735																			
		Tilt of mast/fork carriage forward/backward	α/β(°)		6/12				6/12				6/12				6/12				6/12				6/12				6/12																			
Dimensions	4.2	Height, mast lowered	h1 (mm)		2010				2010				2010				2010				2160				2160				2160																			
	4.3	Free lift	h2 (mm)		145				145				145				145				150				150				150																			
	4.4	Lift	h3 (mm)		3000				3000				3000				3000				3000				3000				3000																			
	4.5	Height, mast extended	h4 (mm)		4140				4140				4140				4140				4140				4140				4140																			
	4.7	Height of overhead guard (cabin)	h6 (mm)		2170 (2230*)				2170 (2230*)				2170 (2230*)				2170 (2230*)				2170 (2230*)				2170 (2230*)				2170 (2230*)																			
	4.20	Length to face of forks	l2 (mm)		2750				2750				2750				2750				2800				2800				2800																			
	4.21	Overall width	b1 (mm)		1225				1225				1225				1225				1225				1225				1225																			
	4.22	Fork dimensions ISO 2331	s/e/l (mm)		1070x122x45				1070x122x45				1070x122x45				1070x122x45				1070x122x50				1070x122x50				1070x122x50																			
	4.31	Ground clearance, laden, below mast	m1 (mm)		130				130				130				130				130				130				130																			
	4.32	Ground clearance, centre of wheelbase	m2 (mm)		175				175				175				175				175				175				175																			
	4.35	Turning radius	Wa (mm)		2375				2375				2375				2375				2415				2415				2415																			
		*Min. right angle stacking aisle width (Add load length and clearance)	mm		2855				2855				2855				2855				2900				2900				2900																			
	Performance data	5.1	Travel speed, laden/unladen	km/h		-19				-18.5				-18				-18				-19				-18.5				-18																		
5.2		Lift speed, laden/unladen	m/s		0.380				0.460				0.430				0.360				0.360				0.390				0.360																			
5.3		Lowering speed, laden/unladen	m/s		0.500				0.500				0.500				0.500				0.500				0.500				0.500																			
5.5		Drawbar pull, laden/unladen	N		18400				24600				23100				24500				17600				23600				20700				21400															
5.7		Gradeability, laden/unladen	%		15				20				15				20				20				18				20				18															
Combustion-engine		7.1	Engine manufacturer/type	ISUZU/C240NKFC01		ISUZU/4JG2 PE-01		UD/TD27		XINCHAI/A498BT1-1		YANMAR/4TN932-HR		YANMAR/4TN938-BQFLC		CUMMINS/QSF2.8I3NA49		MITSUBISHI/S45-Z362CSFL		YANMAR/4TNV94L-BXPHZ		XINCHAI/C490BPG		XINCHAI/A490BPG		ISUZU/4JG2PE-01		UD/TD27		XINCHAI/A498BT1-1		YANMAR/4TN938-BQFLC		CUMMINS/QSF2.8I3NA49		MITSUBISHI/S45-Z362CSFL		YANMAR/4TNV94L-BXPHZ		XINCHAI/C490BPG		XINCHAI/A490BPG						
		Emission STD	StageIIA/GB3		Stage II		StageIIA		StageIIA/Tier 2		StageIIA/Tier 3		StageIIA		StageIIA		StageIIA		StageIIA		StageIIA		StageIIA		StageIIA		StageIIA/Tier3		StageIIA		StageIIA		StageIIA		StageIIA		StageIIA											
	7.2	Engine power according to DIN ISO 1585	kw		35.4				46				38.5				36.8				42.1				36.5				35.3				34.6				40				37							
	7.3	Rated speed	min		2500				2450				2300				2400				2450				2300				2500				2250				2400				2650							
	7.4	Number of cylinders/displacement	(-)/(cm ³)		4/2369				4/3059				4/2663				4/3168				4/2659				4/3319				4/2800				4/3331				4/3054				4/2670				4/2540			
	7.10	Battery voltage/nominal capacity	V/Ah		12/90				12/90				12/90				12/90				12/90				12/90				12/90				12/90				12/90				12/90							
		Rated torque	N·m/r/min		137.7/1800				186/1700				160/2300				186/1700				149.4/1600				186/1700				186/1500				177/1700				191-208.5/1500				160/1800-2000				148/1900			
		Bore x stroke	mm		86x102				95.4x107				96x92				98x105				92x100				98x110				94x100				94x120				94x110				90x105				96x92			
		Transmissions Manufacturer	CHINA		OKAMURA		CHINA		EXIDY		CHINA		CHINA		CHINA		OKAMURA		CHINA		OKAMURA		CHINA		CHINA		CHINA		EXIDY		CHINA		CHINA		OKAMURA		CHINA		OKAMURA									
		Transmissions Type	Powershift		Powershift		Powershift		Powershift		Powershift		Powershift		Powershift		Powershift		Powershift		Powershift		Powershift		Powershift		Powershift		Powershift		Powershift		Powershift		Powershift		Powershift		Powershift									
	Stage FWD/RVS	1/1		1/1		1/1		1/1		1/1		1/1		1/1		1/1		1/1		1/1		1/1		1/1		1/1		1/1		1/1		1/1		1/1		1/1												
Addition data	10.1	Operating pressure for attachments	bar		175				175				175				175				175				175				175																			
	10.4	Fuel tank capacity	liter		70				70				70				70				70				70				70																			

Note: * With suspension seat or cabin.

- 1.Special lifting height available(Duplex mast:2.5m,2.7m,3.0m,3.3m,3.6m,4m,4.5m.Triplex mast:4.3m,4.5m,4.8m,5m,5.5m,6m) 2.Attachment available.
- 3.The specification in the table are for standard models only.For further information please contact us. 4.Specification are subject to change without notice.

1.0-1.8t R series mast:(pneumatic)

Type	Model	Max. fork height	Overall height						Free lift		Front Overhang		Tilt range		Capacity								
			Lowered	Extended		Without backrest		With backrest	mm	mm	1 / 1.5t	1.75t	FWD	BWD	Load capacity at 500mm			Load capacity at 600mm					
				Without backrest	With backrest	mm	mm								Single tire	Double tire	Single tire	Double tire					
																			mm	mm	kg	kg	kg
Wide view mast	R15/18M200	2000	1495	2585	2955	155	155	405	410	6	12	1000	1500	1750	1000	1500	1750	900	1350	1550	900	1350	1550
	R15/18M250	2500	1745	3085	3455	155	155	405	410	6	12	1000	1500	1750	1000	1500	1750	900	1350	1550	900	1350	1550
	R15/18M270	2700	1845	3285	3655	155	155	405	410	6	12	1000	1500	1750	1000	1500	1750	900	1350	1550	900	1350	1550
	R15/18M300	3000	1995	3585	3955	155	155	405	410	6	12	1000	1500	1750	1000	1500	1750	900	1350	1550	900	1350	1550
	R15/18M330	3300	2145	3885	4255	155	155	405	410	6	12	1000	1500	1750	1000	1500	1750	900	1350	1550	900	1350	1550
	R15/18M350	3500	2245	4085	4455	155	155	405	410	6	12	1000	1500	1750	1000	1500	1750	900	1350	1550	900	1350	1550
	R15/18M360	3600	2345	4185	4555	155	155	405	410	6	12	1000	1500	1750	1000	1500	1750	900	1350	1550	900	1350	1550
	R15/18M400	4000	2595	4585	4955	155	155	405	410	6	12	950	1400	1650	1000	1500	1750	850	1250	1500	900	1350	1550
	R15/18M430	4300	2745	4885	5255	155	155	405	410	6	6	900	1300	1550	950	1400	1650	800	1150	1400	850	1250	1500
	R15/18M450	4500	2845	5085	5455	155	155	405	410	6	6	850	1250	1450	900	1350	1550	750	1100	1300	800	1200	1400
Wide view full free duplex mast	R15/18M480	4800	2995	5385	5755	155	155	405	410	6	6	750	1100	1250	800	1200	1350	670	1000	1100	700	1100	1200
	R15/18M500	5000	3095	5585	5955	155	155	405	410	6	6	700	1050	1150	750	1150	1250	620	950	1050	670	1030	1100
	N15/18U250	2500	1760	3105	3455	1095	915	428	433	6	12	1000	1500	1750	1000	1500	1750	900	1350	1550	900	1350	1550
	N15/18U270	2700	1860	3305	3655	1195	915	428	433	6	12	1000	1500	1750	1000	1500	1750	900	1350	1550	900	1350	1550
	N15/18U300	3000	2010	3605	3955	1295	1055	428	433	6	12	1000	1500	1750	1000	1500	1750	900	1350	1550	900	1350	1550
	N15/18U330	3300	2160	3905	4255	1345	1215	428	433	6	12	1000	1500	1750	1000	1500	1750	900	1350	1550	900	1350	1550
	N15/18U360	3600	2310	4205	4555	1395	1365	428	433	6	12	1000	1500	1750	1000	1500	1750	900	1350	1550	900	1350	1550
	N15/18U400	4000	2560	4605	4955	1445	1415	428	433	6	12	950	1400	1650	1000	1500	1750	850	1250	1500	900	1350	1550
	N15/18N400	4000	2010	4770	4955	1250	1065	428	433	6	6	900	1300	1550	950	1400	1650	800	1150	1400	850	1250	1500
	N15/18N430	4300	2110	5070	5255	1350	1165	445	450	6	6	850	1250	1450	900	1350	1550	750	1120	1300	800	1200	1400
Wide view full free triplex mast	N15/18N450	4500	2210	5390	5465	1510	1175	445	450	6	6	800	1200	1350	850	1300	1450	700	1100	1200	750	1150	1300
	N15/18N480	4800	2310	5695	5755	1600	1290	445	450	6	6	750	1100	1250	800	1200	1350	670	1000	1100	700	1100	1200
	N15/18N500	5000	2410	5995	5955	1690	1405	445	450	6	6	700	1050	1150	750	1150	1250	620	950	1050	670	1030	1100
	N15/18N550	5500	2660	6420	6455	1850	1515	445	450	3	6	600	950	1050	600	950	1050	550	850	950	550	850	950
	N15/18N600	6000	2885	6855	6855	2000	1740	445	450	3	6	450	750	850	450	750	850	400	600	700	400	600	750
	N15/18N650	6500	3135	7290	7255	2200	1905	445	450	3	6	350	650	750	350	650	750	300	500	600	300	500	650
	N15/18N700	7000	3385	7725	7655	2400	2140	445	450	3	6	250	550	650	250	550	650	200	400	500	200	400	550

With sideshifter minus 150Kg,with integral sideshifter minus 100kg

2.0-2.5t R series mast:(pneumatic)

Type	Model	Max. fork height	Overall height						Free lift		Front Overhang		Tilt range		Capacity					
			Lowered	Extended		Without backrest		With backrest	mm	mm	mm	mm	FWD	BWD	Load capacity at 500mm			Load capacity at 600mm		
				Without backrest	With backrest	mm	mm								Single tire	Double tire	Single tire	Double tire		
																			kg	kg
Wide view mast	R25M250	2500	1745	3135	3545	140	140	470	470	6	12	2000	2500	2500	2000	2500	2000	2500		
	R25M270	2700	1845	3335	3745	140	140	470	470	6	12	2000	2500	2500	2000	2500	2000	2500		
	R25M300	3000	1995	3635	4045	140	140	470	470	6	12	2000	2500	2500	2000	2500	2000	2500		
	R25M330	3300	2145	3935	4345	140	140	470	470	6	12	2000	2500	2500	2000	2500	2000	2500		
	R25M350	3500	2245	4135	4545	140	140	470	470	6	12	2000	2500	2500	2000	2500	2000	2500		
	R25M360	3600	2345	4235	4645	140	140	470	470	6	12	2000	2500	2500	2000	2500	2000	2500		
	R25M400	4000	2595	4645	5045	140	140	470	470	6	12	1800	2300	2000	1800	2100	1950	2450		
	R25M430	4300	2745	4935	5345	140	140	470	470	6	6	1800	2100	1700	1700	1900	1700	2100		
	R25M450	4500	2845	5135	5545	140	140	470	470	6	6	1700	2000	1600	1600	1900	1700	2100		
	R25M480	4800	2995	5435	5845	140	140	470	470	6	6	1500	1700	1400	1400	1700	1500	1900		
Wide view full free duplex mast	R25U250	2500	1810	3170	3545	1140	760	460	460	6	12	2000	2500	2500	2000	2500	2000	2500		
	R25U270	2700	1910	3370	3745	1240	860	460	460	6	12	2000	2500	2500	2000	2500	2000	2500		
	R25U300	3000	2010	3670	4045	1340	960	460	460	6	12	2000	2500	2500	2000	2500	2000	2500		
	R25U330	3300	2160	3970	4345	1490	1110	460	460	6	12	2000	2500	2500	2000	2500	2000	2500		
	R25U360	3600	2310	4270	4645	1640	1260	460	460	6	12	2000	2500	2500	2000	2500	2000	2500		
	R25U400	4000	2560	4670	5045	1890	1510	460	460	6	12	1900	2300	2000	1900	2200	2000	2500		
	R25N400	4000	1955	4695	5055	1270	910	475	475	6	6	1800	2100	1600	1600	1950	1750	2450		
	R25N430	4300	2055	4955	5355	1370	1010	475	475	6	6	1700	2000	1500	1500	1900	1700	2400		
	R25N450	4500	2125	5245	5605	1440	1080	475	475	6	6	1600	1900	1400	1400	1800	1600	2300		
	R25N470	4700	2174	5385	5745	1488	1128	475	475	6	6	1500	1700	1300	1300	1700	1500	2100		
Wide view full free triplex mast	R25N480	4800	2225	5495	5855	1540	1180	475	475	6	6	1500	1700	1200	1200	1700	1500	2100		
	R25N500	5000	2290	5695	6055	1605	1245	475	475	6	6	1400	1600	1100	1100	1600	1400	2000		
	R25N550	5500	2455	6195	6555	1770	1410	475	475	3	6	1050	1200	900	900	1500	1300	1800		
	R25N600	6000	2675	6705	7055	1990	1630	475	475	3	6	700	800	600	600	1400	1200	1600		
	R25N650	6500	2895	7215	7555	2165	1805	475	475	3	6	500	600	400	400	1100	900	1300		
	R25N700	7000	3055	7725	8065	2340	2010	475	475	3	6	400	500	300	300	800	600	1000		
	R25D400	4000	2024	4804	5056	1230	978	467	467	6	6	1800	2100	1600	1600	1950	1750	2450		
	R25D430	4300	2124	5104	5356	1330	1078	467	467	6	6	1700	2000	1500	1500	1900	1700	2400		